



Level 3-SAMPLE ANSWER KEY

National Federation of Music Clubs – Festival Theory Test SAMPLE - LEVEL 3 - SAMPLE

Name: _____ Date: _____ ID: _____ Rating: _____
(Superior 90-100, Excellent 80-89.5, Satisfactory 70-79.5, Fair 60-69.5, Needs Improvement <60)

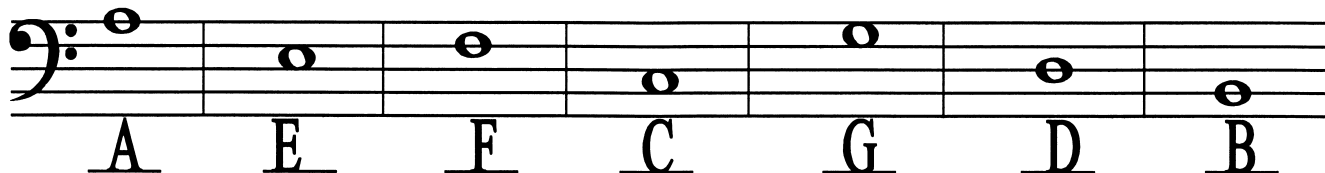
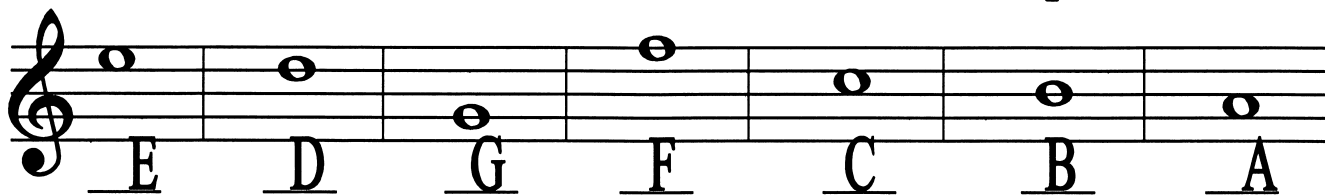


-1 pt. each blank

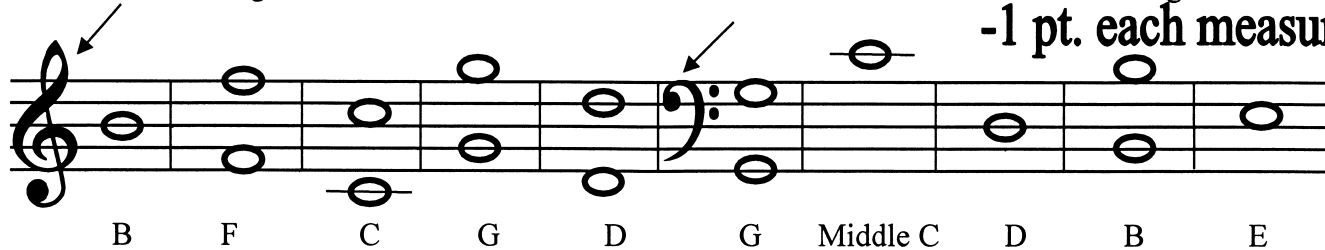
1. Print the music alphabet going up and back down. 'A' is given. Do not repeat the 7th letter. (11)

A B C D E F G F E D C B A

2. Write the name of the note below each measure. **-1 pt. each blank** (14)



3. Draw the following notes as named below each measure. Use whole notes. Watch clef signs. (10)



-1 pt. each measure

-1 pt. each measure

4. Draw the type of note or rest indicated below each measure. Remember the stem rule. (5)



Dotted half note

Half rest

Quarter note

Quarter rest

Whole rest

Line 2

Space 3

Must be recognizable. - 1/2 pt. if stem is wrong or dot is on wrong side.

No deduction if dot is not in the space.

Copyright ©2021 National Federation of Music Clubs

All rights reserved.











Level 3-SAMPLE ANSWER KEY

SAMPLE - Level 3 - page 2

5. Write the number of beats each note or rest receives in 4/4 time:

-1/2 pt. each (4)

 = <u>2</u>	 = <u>4</u>	 = <u>3</u>	 = <u>1</u>
 = <u>2</u>	 = <u>4</u>	 = <u>1</u>	 = <u>1</u>












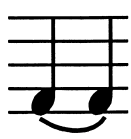
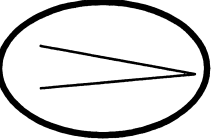
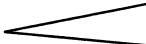




-1 pt. each blank

6. Name the interval on the line below each measure. (Ex. 2nd, 3rd, 4th, 5th, 6th, 7th, 8ve) (5)

				
<u>4th</u>	<u>7th</u>	<u>2nd</u>	<u>6th</u>	<u>3rd</u>

7. Circle the correct sign for each term below.

-1 pt. each circle (10)

Brace	<input type="radio"/> 	<input type="radio"/> 	G clef	<input type="radio"/> 	<input type="radio"/> 
Whole rest	<input type="radio"/> 	<input type="radio"/> 	<i>mezzo piano</i>	<input type="radio"/> <i>mf</i>	<input type="radio"/> <i>mp</i>
Beam	<input type="radio"/> 	<input type="radio"/> 	Natural	<input type="radio"/> 	<input type="radio"/> 
Slur	<input type="radio"/> 	<input type="radio"/> 	<i>decrescendo</i>	<input type="radio"/> 	<input type="radio"/> 
F clef	<input type="radio"/> 	<input type="radio"/> 	Quarter note	<input type="radio"/> 	<input type="radio"/> 

Level 3-SAMPLE ANSWER KEY

SAMPLE - Level 3 - page 3

Name: _____

8. Write the top number of the time signature in each measure. **-1 pt. each measure** (3)

A B C

9. On the staff below:
 A. Draw bar lines. Look at the time signature. **-1 pt. each bar line** (3)
 B. Draw a double bar line where needed. **-1 pt. double bar line** (1)

10. Write numbers below each note or rest as you would count aloud. Look at the time signature. **-1 pt. each measure** (4)
Dashes are optional. Either way of counting is correct.

1-2 1-2 1 1 1 1 1-2-3 1 1-2-3-4

1 2 3 4 1 2 3 4 1 2 3 4 1 2 3 4

11. Draw ONE NOTE below each arrow as needed to complete each measure. **-1 pt. each measure** (4)

12. Draw ONE REST below each arrow as needed to complete each measure. **-1 pt. each measure** (4)

Level 3-SAMPLE ANSWER KEY

SAMPLE - Level 3 - page 4

-1 pt. each blank

13. Write the major scale whole and half step pattern in the blanks below. Use W for whole step and H for half step. (7)

W W H W W W H



14. On each major scale below:
- A. Mark the half steps with slurs where they would occur in a major scale. **-1/2 pt. each slur** (2)
 - B. Circle the tonic note. **-1 pt. each tonic. Only ONE tonic note needs to be circled in each scale.** (2)
 - C. Write the letter name of each major scale in the blank below the staff. **-1 pt. each key name** (2)

G Major

F Major

15. For each major key signature below:
- A. Write the letter name of the major key in the blank below each measure. **-1 pt. each key name** (6)
 - B. After each key signature, draw a whole note on the tonic. **-1/2 pt. each tonic.** (3)
- Only one tonic note is required for each key.**

C Major

F Major

G Major

G Major

C Major

F Major