



National Federation of Music Clubs – Festival Theory Test
SAMPLE - LEVEL 7 - SAMPLE

Name: _____ Date: _____ ID: _____ Rating: _____

(Superior 90-100, Excellent 80-89.5, Satisfactory 70-79.5,
 Fair 60-69.5, Needs Improvement <60)

1. Circle the lower-sounding note in each measure below. (4)

A grand staff with four measures. Each measure contains two whole notes. Measure 1: Treble clef has a note on the 2nd line (D4), Bass clef has a note on the 2nd space (G3). Measure 2: Treble clef has a note on the 3rd line (E4), Bass clef has a note on the 3rd space (A3). Measure 3: Treble clef has a note on the 4th line (F4), Bass clef has a note on the 4th space (B3). Measure 4: Treble clef has a note on the 5th line (G4), Bass clef has a note on the 5th space (C4).



2. Draw a whole note on the opposite staff that has the EXACT SAME PITCH as the given note. (4)

A grand staff with four measures. Each measure contains one whole note. Measure 1: Treble clef has a note on the 2nd line (D4), Bass clef has a note on the 2nd space (G3). Measure 2: Treble clef has a note on the 3rd line (E4), Bass clef has a note on the 3rd space (A3). Measure 3: Treble clef has a note on the 4th line (F4), Bass clef has a note on the 4th space (B3). Measure 4: Treble clef has a note on the 5th line (G4), Bass clef has a note on the 5th space (C4).

3. Draw a DIATONIC half step ABOVE the given note. Do not alter the given note. (5)

A single staff with five measures. Each measure contains one whole note. Measure 1: Treble clef, key signature of one flat, note on the 2nd space (G3). Measure 2: Treble clef, key signature of one flat, note on the 3rd line (A3). Measure 3: Treble clef, key signature of two sharps, note on the 3rd space (A3). Measure 4: Treble clef, key signature of one flat, note on the 4th space (B3). Measure 5: Treble clef, key signature of one flat, note on the 5th space (C4).

4. Draw a whole note on the next line or space that is a WHOLE STEP BELOW the given note. Do not alter the given note. (5)

A single staff with five measures. Each measure contains one whole note. Measure 1: Bass clef, key signature of one flat, note on the 2nd space (G3). Measure 2: Bass clef, key signature of one flat, note on the 3rd line (A3). Measure 3: Bass clef, key signature of one flat, note on the 4th space (B3). Measure 4: Bass clef, key signature of one flat, note on the 5th space (C4). Measure 5: Bass clef, key signature of two sharps, note on the 5th space (C4).

5. Name each interval below and indicate if it is major or perfect. (6)

Example:

Maj 6th _____

6. On the staff below:

A. Draw bar lines. (3)

B. Write counts under each note or rest as you would count them. (4)

7. Add ONE NOTE to complete each measure below each arrow. (4)

8. One ONE REST to complete each measure below each arrow. Do not use a dotted half rest. (4)

9. For each measure below:

A. Write the correct top number for each time signature. (4)

B. Write SIMPLE, COMPOUND or ASYMMETRICAL on the line below each measure to indicate the type of meter. (8)

Name: _____



10. On the grand staff below, place sharps or flats before the notes, as needed in each clef, to make a major scale. (2)

B Major

11. On the staff below:

A. Draw a key signature with sharps or flats as named above each measure. (8)

B. Name the minor key on the line below the measure. (4)

___ minor

___ minor

___ minor

___ minor

12. Name the relative minor of each major key listed below. (6)

A Major / ___ minor

C \flat Major / ___ minor

G Major / ___ minor

E \flat Major / ___ minor

D \flat Major / ___ minor

F# Major / ___ minor

13. On each natural minor scale below:

A. Mark the half steps with slurs where they would occur in a natural minor scale. (2)

B. Draw sharps or flats before the notes as needed to make a natural minor scale in the given key. (4)

c minor

g# minor



14. Name the following major keys below each measure.

(6)



_____ Major _____ Major _____ Major _____ Major _____ Major _____ Major

15. Draw a major triad going UP from each given note. Do not alter the given note.

(3)



16. For each measure below on the grand staff:

A. Draw the key signatures as indicated.

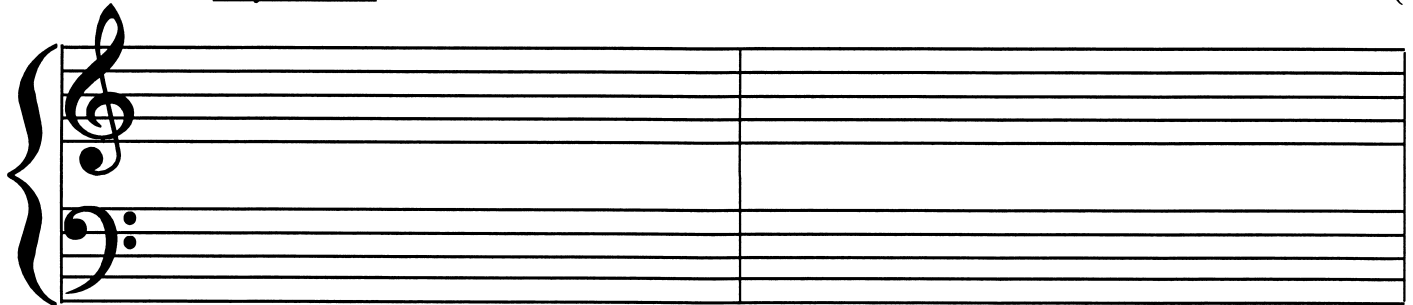
(2)

B. Draw the I, IV and V triads in root position on the treble staff. Use whole notes.

(6)

C. Draw only the root of each triad on the bass staff. Use whole notes.

(3)



Cb Major:

I

IV

V

D Major:

I

IV

V

17. Write the letter of the correct definition in the blank to the left of each musical term.

(3)

_____ *Allegretto*

A. a combination of two simple meters

_____ Simple meter

B. a fast walking *tempo*

_____ *Andantino*

C. a very slow *tempo*

_____ Compound meter

D. a meter where the beats divided into two or four parts

_____ *Largo*

E. a *tempo* that means “a little fast”

_____ Asymmetrical meter

F. a meter where the beats are divided into three or six parts