



Level C-SAMPLE-ANSWER KEY



National Federation of Music Clubs – Festival Theory Test SAMPLE - LEVEL C - SAMPLE


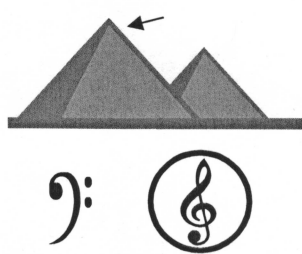

Name: _____ Date: _____ ID: _____ Rating: _____

(Superior 90-100, Excellent 80-89.5, Satisfactory 70-79.5,
Fair 60-69.5, Needs Improvement <60)

- 2 pts. each (6)

1. For each picture below:

- A. Circle the treble clef  if the picture is something that is high.
- B. Circle the bass clef  if the picture is something that is low.

		
---	---	---

2. Write the letter name that comes before the given letter.

- 1 pt. each (5)

 E F B C G A C D A B

3. Write the letter name that comes after the given letter.

- 1 pt. each (5)

E F C D G A F G B C

4. Write the letter name that comes in between the two given letters in each box.

- 1 pt. each (5)

F <u> G </u> A	E <u> F </u> G	B <u> C </u> D	G <u> A </u> B	A <u> B </u> C
------------------	------------------	------------------	------------------	------------------

5. Write C, D or E on the white keys with the same letter name on the keyboard below.

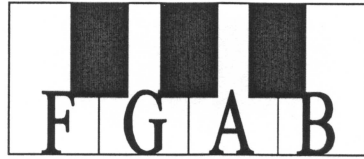
- 1 pt. (1)



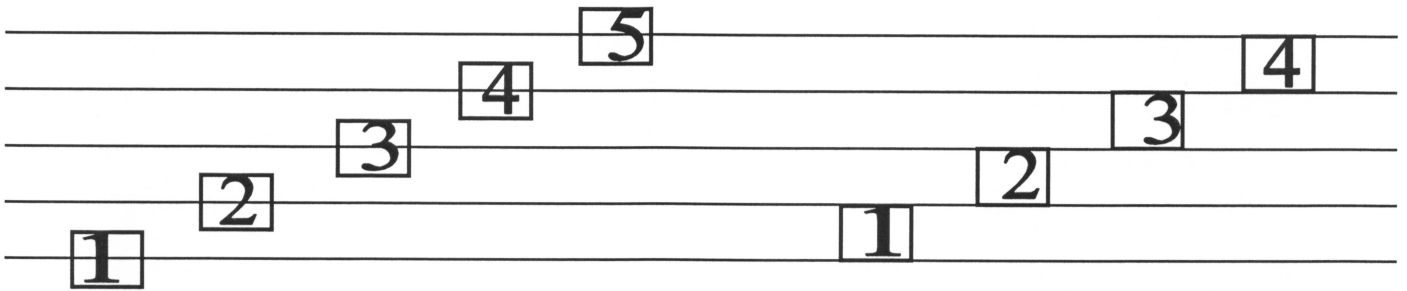
Level C-SAMPLE-ANSWER KEY

SAMPLE - Level C - page 2

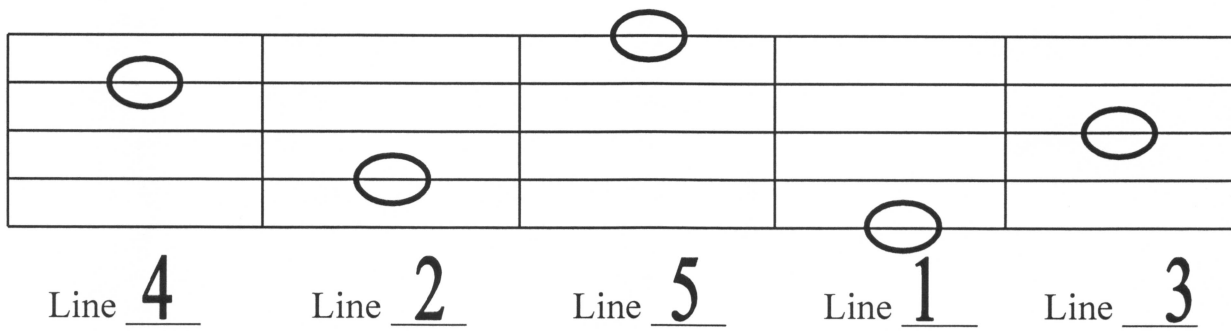
6. Write F, G, A or B on the white keys with the same letter name on the keyboard below. - 1 pt. (1)



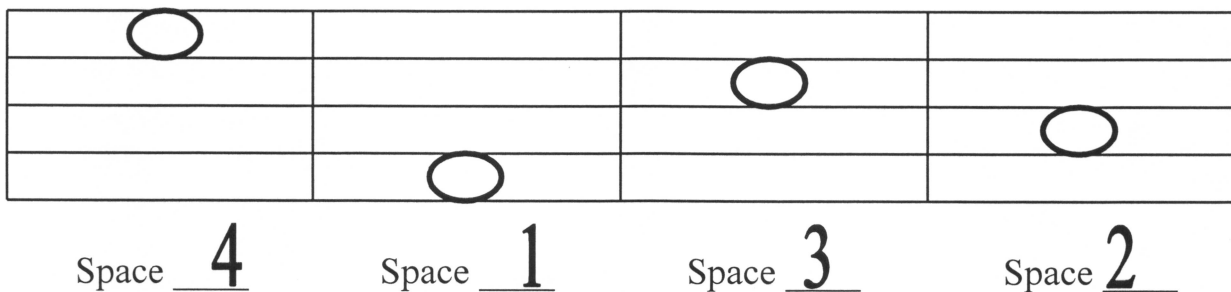
7. Number the lines and spaces of the staff inside each box. - 2 pts. each (18)



8. Write the number of the line the note is on. - 2 pts. each (10)



9. Write the number of the space the note is on. - 2 pts. each (8)



Level C-SAMPLE-ANSWER KEY

SAMPLE - Level C - page 3

Name: _____

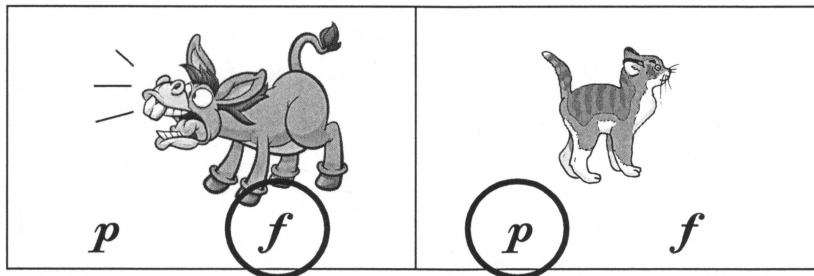
10. For each picture below:

A. Circle **f** if the picture is something that sounds loud.

- 2 pts. (2)

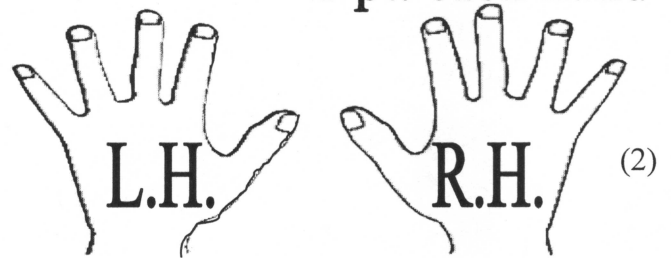
B. Circle **p** if the picture is something that sounds soft.

- 2 pts. (2)



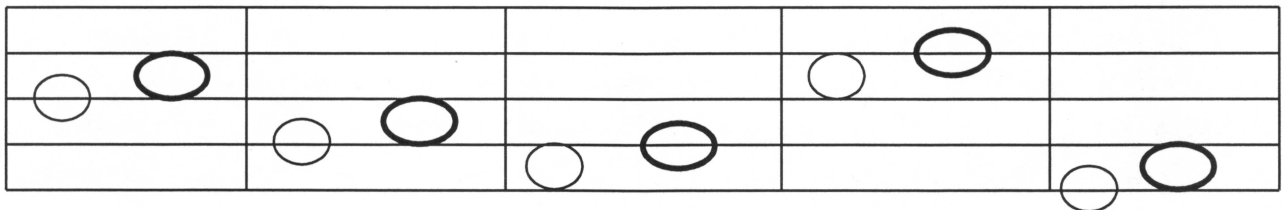
- 1 pt. each hand

11. Write LH on the left hand and RH on the right hand.



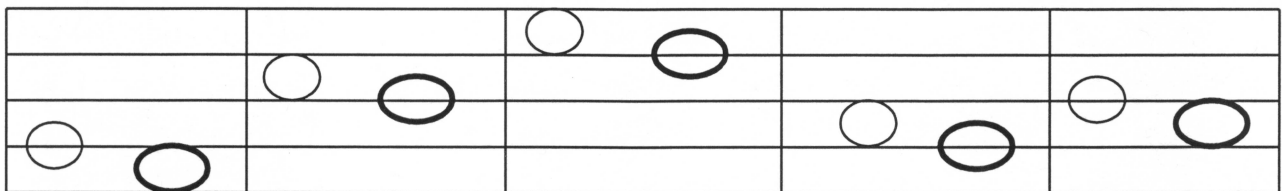
12. Draw a whole note a STEP UP from the given note.

- 1 pt. each (5)



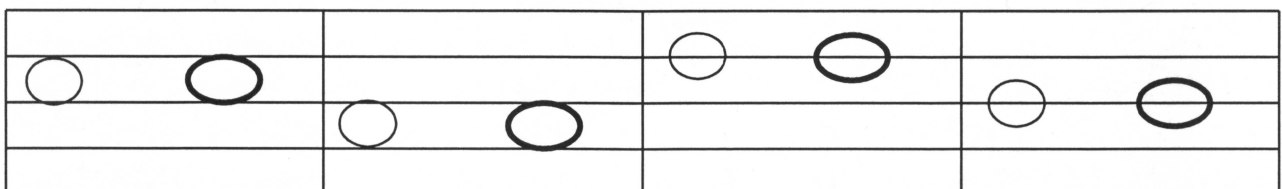
13. Draw a whole note a STEP DOWN from the given note.

- 1 pt. each (5)



14. Draw a REPEATED NOTE after each given note. Use whole notes.

- 2 pts. each (8)



Level C-SAMPLE-ANSWER KEY

SAMPLE - Level C - page 4

15. Circle the lowest note in each measure.

- 1 pt. each (4)

(a) (b) (c) (d)

16. Circle Step or Skip to show how the second note moves in each example.

- 1 pt. each (4)

Step Skip Step Skip Step Skip Step Skip

17. Below each measure, circle the letter name of each whole note placed on the treble or bass staff. Look at clef signs.

- 1 pt. each (5)

(a) (b) (c) (d) (e)

B D G **F** D **C** G E F C B **G** **C** F G E D B **G** E

- 1 pt. each measure
1 2 3 4 is also acceptable.

18. Write numbers below each note or rest as you would count aloud.

(4)

or

1 1 1 1 | 1 1 1 2 | 1 2 1 1 | 1 1 1 2
1 2 3 4 | 1 2 3 4 | 1 2 3 4 | 1 2 3 4